



Korean Language Kit

Features

Ease of use

- Power Input Method with support for *hanja* conversion
- Simple, customizable installation process
- Documentation in both English and Korean
- Transparent labels for a popular Korean keyboard layout

Comprehensive, high-quality fonts

- Five Korean fonts that include over 2,000 symbols and 4,888 *hanja* characters
- Extended symbol character set and support for *hiragana* and *katakana* characters
- Apple TrueType format for high-quality on-screen and printed characters
- Full compatibility with QuickDraw GX

Versatile multilingual capabilities

- Switch between languages easily
- Combine Korean and other languages in the same document
- Install as many language kits as needed on a single Macintosh system

Compatibility

- Works with System 7.1 and all subsequent versions of the Mac OS
- Is compatible with any localized version of the Mac OS and with other Apple Language Kits
- Runs in native mode on Power Macintosh computers

Apple's Korean Language Kit is an easy, affordable way to add Korean text to your documents.

After the simple installation process, you can switch effortlessly between the computer's main language and Korean. The kit lets you enter, edit, and print Korean, and mix Korean with other languages in the same document—even in the same sentence. You can also use it to view Korean-language World Wide Web sites with the addition of Internet browsing software.

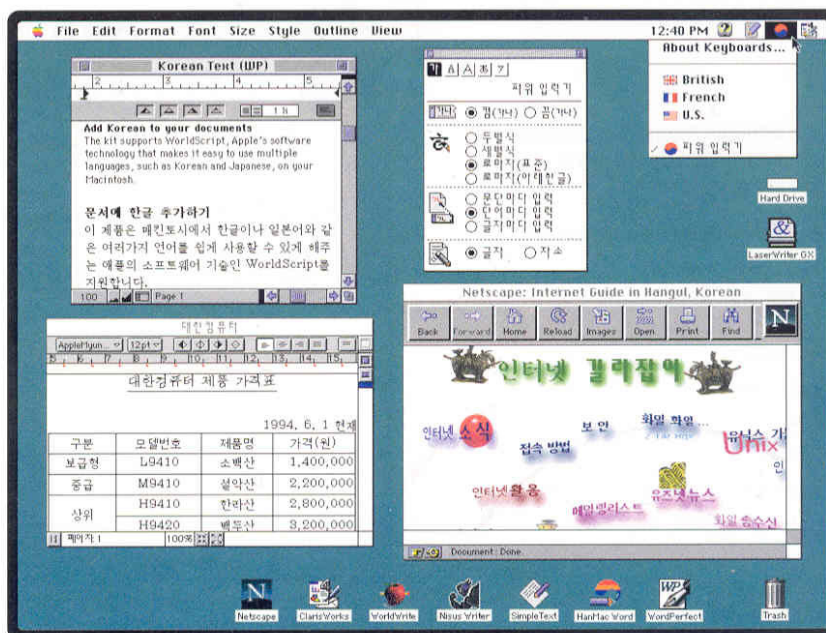
The Korean Language Kit comes with the Power Input Method, a feature-rich input method that allows conversion from *hangul* to *hanja*, can display the command menu in English or Korean, and provides an easy-to-use interface. The kit also includes two keyboard layouts for native speakers and two *romaja* modes for easy Korean input by non-native speakers. Also included is a set of transparent labels for customizing your keyboard.

The kit includes five QuickDraw GX-compatible TrueType fonts that

produce high-quality on-screen and printed characters at many sizes. Unlike most other Korean language solutions, the Korean Language Kit offers full *hanja* support, including the *hanja* Dictionary Utility that allows a user to create a personal *hanja* dictionary.

The Korean Language Kit is based on Apple's WorldScript technology, which simplifies the way in which a single operating system can support multiple languages. It works with world-ready applications that take advantage of WorldScript, such as ClarisWorks 4.0, WordPerfect, Nisus Writer, and WorldWrite. It can also be used with Korean localized applications.

This product is part of a family of Apple language solutions, which offer an affordable way to internationalize your Macintosh system. In addition to the Korean Language Kit, Apple's multilingual product offerings include the Japanese Language Kit, the Chinese Language Kit, the Chinese Dictation Kit, the Hebrew Language Kit, the Arabic Language Kit, the Cyrillic Language Kit, and others.





Korean Language Kit

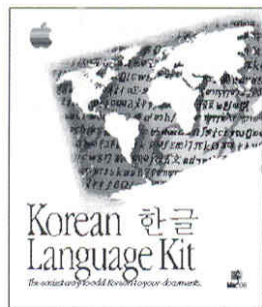
Ordering Information

Korean Language Kit

Order No. 400000Z

- 1.4MB floppy disks and one CD-ROM containing:
 - Korean Language Kit
 - SimpleText Korean, a basic text-processing application
 - Demonstration versions of compatible applications and utilities
- Transparent keyboard labels with Korean characters
- *Korean Language Kit Installing and getting started* (in English and Korean)
- *Macintosh Korean Input Method Guide* (in English and Korean)

Product specifications are subject to change. Check with your Apple reseller for the most current information about product specifications and configurations.



Claris distributes Apple software products and is a wholly owned subsidiary of Apple Computer, Inc.

For presales information or to order product:

Claris Corporation
5201 Patrick Henry Drive
Box 58168
Santa Clara, CA 95052-8168
1-800-544-8554

Claris Canada, Inc.
3 Church Street, Suite 402
Toronto, Ontario M5E 1M2
1-800-361-6075

For presales or technical information:

Apple Computer, Inc.
1 Infinite Loop
Cupertino, CA 95014
1-800-SOS-APPLE
<http://www.apple.com/>

Technical Specifications

Included fonts

- AppleMyungjo (TrueType, serif font)
- AppleGothic (TrueType, sans-serif font)
- Gungseoche (TrueType, calligraphy font)
- Pilgiche (TrueType, cursive font)
- Seoul (TrueType, system font)

Application compatibility

The Korean Language Kit is based on Apple's WorldScript technology, and is compatible with all applications that take advantage of WorldScript.

These programs include:

- ClarisWorks from Claris Corporation
- HyperCard from Apple Computer, Inc.
- WordPerfect from Novell, Inc.
- Nisus Writer from Nisus Software, Inc.
- WorldWrite from World Software Corporation
- WinText from WinSoft S.A.
- LightningDraw GX from Lari Software, Inc.
- Ready, Set, Go! GX from Modular Software, Ltd.
- Eudora from QUALCOM, Inc.

The Korean Language Kit can be used with a variety of applications localized for Korean. They include:

- ClarisWorks K from Claris Corporation
- Claris Organizer K from Claris Corporation
- HyperCard K from Apple Computer, Inc.
- Photoshop K from Adobe Systems Incorporated
- Adobe Illustrator K from Adobe Systems Incorporated
- PageMaker K from Adobe Systems Incorporated

Note: Apple has tested only a limited number of applications, therefore these lists are not intended to be comprehensive. Many nonlocalized applications that do not employ WorldScript software technology may provide limited functionality and allow input of Korean characters. Many Japanese localized applications will also work with the Korean Language Kit.

System requirements

- One of the following Macintosh or other Mac OS-compatible computers:
 - An Apple Macintosh or PowerBook computer with a 68020 or later processor and 5MB of RAM
 - A Power Macintosh computer with 8MB of RAM
- Macintosh System 7.1 or later
- An Apple SuperDrive floppy disk drive or a CD-ROM drive
- An application that supports WorldScript or has been localized for Korean

Sample Fonts

애플 명조	AppleMyungjo
애플 고딕	AppleGothic
궁서체	Gungseoche
필기체	Pilgiche
서울	Seoul

© 1996 Apple Computer, Inc. All rights reserved. Apple, the Apple logo, Apple SuperDrive, HyperCard, LaserWriter, Macintosh, the Mac OS logo, PowerBook, Power Macintosh, TrueType, and WorldScript are trademarks of Apple Computer, Inc., registered in the U.S.A. and other countries. Mac and QuickDraw are trademarks of Apple Computer, Inc. Claris and ClarisWorks are registered trademarks and Claris Organizer is a trademark of Claris Corporation, registered in the U.S.A. and other countries. Illustrator, PageMaker, and Photoshop are trademarks of Adobe Systems Incorporated or its subsidiaries and may be registered in certain jurisdictions. All other trademarks are the property of their respective owners. Mention of non-Apple products is for informational purposes only and constitutes neither an endorsement nor a recommendation. Apple assumes no responsibility with regard to the selection, performance, or use of these products. All understandings, agreements, or warranties, if any, take place directly between the vendors and the prospective users.
February 1996. Product specifications are subject to change without notice. Printed in U.S.A.
L01721A